



TPO Society Auction Summer 2020

Welcome to the next TPO & Seapost Society Auction which opens on **15th June and close on 15th July, 2020**. Recent global events have been disturbing and disastrous for us all especially those who have lost loved ones to this pandemic. Our way of life is threatened and it does not bear thinking about what it may be like when it is all over. Will we ever get back to anything like our normal life styles? Perhaps this little list may bring a smile to your faces in the short term.

I hope you have stocked up with sufficient mounting corners and album leaves to see you through and enable you to fill in those extra lockdown hours with interest and amusement. With local societies postponed, stamp fairs cancelled and fewer catalogues to look at, here is a total of 194 auction lots to pique your interest and, hopefully, encourage you to bid in order to extend and develop your collections. I hope you find it interesting – there is some good stuff here but only a limited list of Seapost items so if you need to dispose of any of yours you know where to come.

A list of late lots can be found at the end of the Railway and Seapost sections.

A list of 'First come First served' multiple items are attached to the end of the auction. First to contact by phone or email gets the lot. Contact details can be found in the journal.

| <i>Lot</i> | <i>Description</i> | <i>Res</i> |
|----------------|---|------------|
| Railway | | |
| 1 | GB ABERYSTWYTH -SHREWSBURY S.C. * 18 AP 36 cancels E7 penny stamp on pc to Cardiff | £7.50 |
| 2 | GB BANGOR & CREWE- T.P.O / FROM-WEST no index! JU 9 84 (W137) on longer cover to Mold. (Crewe · T.P.O weak) Scarce early item. From a contractor in Rhyl. Some neat receiving notes in red on front | £25 |
| 3 | GB CARNFORTH & WHITEHAVEN T.P.O. J54 duplex (W163) Ap 18 06 on postcard to Sellafield | £6 |
| 4 | GB CARLISLE – EDINBURGH S.C. cds (W708a) cancels two stamps on cover dated 13 Ju n 1957 | £5 |
| 5 | GB CARLISLE - PETERBOROUGH TPO No.1 (star index) dated 31 MY 96 Last day of this duty on colourful Benham cover | £5 |
| 6 | GB CARLISLE - PETERBOROUGH TPO No. 1 (no index) dated 30 SP 91 on Benham 'Changed Travelling Post Office Routes' cover | £5 |
| 7 | GB C&G / R.P.O small circle mark (W718) on penny plate 93 cover from London to Peebles dated SP 11 67 | £20 |
| 8 | GB Bristol-Plymouth T.P.O. double circle (W262a) dated 17 JY 57 on cover to Hounslow | £5 |
| 9 | GB Bristol – Plymouth TPO cds (W261) dated 1 JA 55 on Late Fee cover to Plymouth | £5 |
| 10 | GB CARDIFF – YORK TPO double circle (W122n) reserve stamp dated 16 MY 88 on Benham 'Changed Travelling Post Office' Routes | £5 |
| 11 | GB CARDIFF & YORK T.P.O / GOING EAST cds with star index (as W117b) dated 24 MY 14 on pc of Newtown, Glanhafren to Staffordshire. | £25 |
| 12 | GB CALEDONIAN T.P.O / NIGHT UP cds (W657d) dated NO 14 06 on pc for Enfield. | £17.50 |
| 13 | GB CALEDONIAN T.P.O. UP / G.W. cds (W667) dated 14 SP 36 on plain FDC for Ed8 1d red stamp. | £5 |
| 14 | GB CALEDONIAN T.P.O. UP / G.W. (W667) and CALEDONIAN T.P.O.UP / E' (W668b) both cds dated 3 JU 53 on two FDC covers with 4d stamps of the Coronation issue. | £10 |
| 15 | GB CALEDONIAN T.P.O. / DAY UP (W665) dated 4 DE 58 on Late Fee cover to Lincoln | £5 |
| 16 | GB CALEDONIAN T.P.O. / DAY DOWN (W665a) dated 5 AP 56 on cover to Middlesex | £5 |
| 17 | GB CALEDONIAN T.P.O. / DAY DOWN (W665c) dated 18 JU 57 on cover to Middlesex | £5 |
| 18 | GB CALEDONIAN T.P.O. DAY UP / 2 (W666) and CALEDONIAN T.P.O. DAY DOWN / 1 (W666c) both DCs dated 30 SP 88 on two Benham 'Changed Travelling Post Office Routes' covers. | £8 |
| 19 | GB CREWE – GLASGOW S.C. / 1 (W729) dated 26 MY 59 on cover to Bath with 'Posted without late fee / 1d to Pay' rectangular box held together with imprint of an elastic band and 1d postage due. | £5 |
| 20 | GB HIGHLAND T.P.O. / UP (NS) / 2 (W818b) dated 6 JA 61 and CALEDONIAN T.P.O. DAY UP / 1 (W666a) for 17 NO 60 both on 6d aerogramme air letters uprated with halfpenny stamps. | £6 |
| 21 | GB CREWE – PETERBOROUGH T.P.O. / (LINC. SECT) (W88e) Reserve stamp on Benham 'Changed Travelling Post Office Routes) dated 27 SP 91. | £5 |
| 22 | GB CREWE – GLASGOW S.C. cds (W727) with index dated 3 JU 49 cancels postal stationery card for Nottingham | £5 |
| 23 | GB CREWE – CARDIFF / T.P.O. cds (W120c) with index 2 dated 17 JU 57 on cover to Greenford | £5 |
| 24 | GB BANGOR & LEEDS RPO The very rare B&L in six-pointed star (W128) as a backstamp on a plate 78 penny red cover cancelled by a Down 178 Irish duplex addressed to Bangor North wales date AP 6 (18)67 | £125 |
| 25 | GB BRISTOL – PLYMOUTH T.P.O. double circle (W262a) dated 30 NO 60 on cover with long boxed 'Posted without late fee / 1d to pay' mark struck in black (as W41) | £6 |



| Lot | Description | Res |
|-----|--|-------|
| 26 | GB CREWE – PETERBOROUGH TPO double circle (W88j) Reserve stamps on two Late Fee covers with Lister Centenary 4d stamps dated 6 JU 66 – the first day of this TPO duty. | £5 |
| 27 | GB CREWE – BIRMINGHAM T.P.O. cds (W146a) dated 26 JA 48 cancels a cover for Gatley, Cheshire plus another cover with the same mark dated 12 JU 57 | £5 |
| 28 | GB CREWE – BIRMINGHAM T.P.O. double circle (W146d) dated 4 AP 61 cancels 5 x halfpenny stamps on an underpaid cover with a larger boxed POSTED WITHOUT LATE FEE / 1D TO PAY (as W42) | £5 |
| 29 | GB BIRMINGHAM – CREWE T.P.O. cds (W146b) dated 28 NO 56 on cover to Greenford. | £5 |
| 30 | GB CREWE-BANGOR T.P.O. thick arc double circles (W138g) on two covers dated 17.6.57 and 31 DE 57 | £5 |
| 31 | GB CREWE – BANGOR T.P.O. double circle (W138i) cancels stamps on a cover dated 5 AU 68 also struck with the older boxed 'Posted without late fee / 1d to pay' (W142) mark. | £5 |
| 32 | GB BELFAST & NTHN COUNTIES T.P.O. UP (W1067a) dated 1 JY 38 cancels stamp on cover to Streetley, Staffs. 'Up' not struck clearly. | £10 |
| 33 | GB BANGOR & CREWE T.P.O. / FROM WEST (W138) cancels 2 GV penny stamps on pc of Betwys y Coed to Stoke on Trent. Excellent strike! | £15 |
| 34 | GB BANGOR - CREWE T.P.O. cds (W138f) cancels stamps on two covers dated 18 MY 38 and 16 JA 50 | £7.50 |
| 35 | GB BRISTOL – PENZANCE TPO (W377m) dated 9 JA 04 on the last day of the TPOs cancels a 18p Mallard stamp and a 10p definitive on a longer cover for the Rail Riders 50 th Anniversary of Mallard 1938-1988!! | £5 |
| 36 | GB BRISTOL – PENZANCE TPO (W377M) dated 9 JA 04 cancels 4 x 1 st class 'The Station' stamps on an official Royal Mail 'Carried on the last TPO – Bristol to Penzance 9-10 January, 2004' cover no 009134 | £5 |
| 37 | GB T.P.O. EXHIBITION CREWE 12 March 80. Large 16 x 24mm Commemorative cover with full strip of 'Liverpool and Manchester Railway 1830' stamps addressed to British rail Crewe Station (Dawn Cover Productions) | £5 |
| 38 | GB GLASGOW & CARLISLE SORTING TENDER index L (W735) dated DE 11 02 cancels cover for Ware, Herts. Roughly opened along top edge. | £5 |
| 39 | GB LONDON and SOUTH WESTERN RAILWAY. Interesting 'Paid' letter from Okehampton Station dated Feb'y 1875 on headed London and South Western Railway notepaper to a solicitor in Launceston. Cover is headed ' Per L. & S.W.Ry ' in ink manuscript with ' Passenger train ' in pencil alongside. An early railway letter or possibly a 'parcel letter' sans string. Nice item! | £50 |
| 40 | South Africa S.A.R. & H. / WARNER – BEACH oval for 26 Aug 48 cancels stamps and Rail Letter Post label (Wagon 7 WNB Station) on cover to Winklespruit | £5 |
| 41 | K.U.T. Cover to Freshford with 2x 10c stamps cancelled by DARESSALAAM – TABORA T.P.O. DOWN double circles dated 7 MR 1951. A third cancel alongside. | £7.50 |
| 42 | K.U.T. Similar cover with a 5c and a 15c stamp cancelled by DARESSALAAM – TABORA T.P.O. UP double circle dated 4 MR 1951. A third cancel alongside | £7.50 |
| 43 | GB-Ireland Cover from London to Bulcrana dated FE 7 02 backstamped by a ULSTER / T.P.O. /DOWN FE 9 02 | £9 |
| 44 | Russia Postcard with stamp cancelled by Russian railway double oval for TPO 40 RIGA – PETROGRAD dated 18.7.15. A second strike alongside. (Destination could be Odessa but not fluent in Russian.) | £12 |
| 45 | Estonia Postcard of Tallin addressed to Finland? with the stamp cancelled by a Russian style railway double oval for TPO 90 for ZANCAN – GAPSAL (Tallin – Haapsaslu) code 'a' dated 28.1.15. Second strike alongside | £12 |
| 46 | GB EAST ANGLIAN TPO. Unposted brown cover with typed inscription – Cessation of the EAST ANGLIAN T.P.O.s (KINGS LYNN SECTIONS) on the introduction of the EAST ANGLIAN T.P.O.s (PETERBOROUGH SECTIONS) Four postmarks - East Anglian T.P.O. Up and Down / K.L. Sect (W.565) both dated 28 OC 49. and E.A.T.P.O. Up and Down / Peterborough Sect (W566) dated 30 OC 49. Excellent strikes. | £10 |
| 47 | GB LONDON – LEEDS T.P.O. dated 27 MY 36 cancels Late Fee postal stationery card to Manchester. Superb | £12 |
| 48 | GB CREWE-GLASGOW S.C. / 2' double circle dated 4 SP 64 with ' AM ' code. Only date this code was used in this TPO. Not common. | £7 |
| 49 | Canada 2 postcards Coal shuts Lake Superior cancelled OTTAWA & FORT WILLIAM R.P.O. JUN 13 09 to England and TOR(onto) & N(orth) B(ay) R.P.O. No.2 dated DE 18 35 to Hamilton. | £5 |
| 50 | France Cachets A Date marks on two covers. - PARIS A BRIANCON dated 2 OCT 1863 to Chagny from Paris (Pothion 720) and PARIS A LYON for 10 Feb 1862 to Romaneche from Paris (Pothion 1121) | £6 |
| 51 | France Cachets A Date marks ANGERS A PARIS 29 Feb 1864 (Night duty) AND PARIS A ANGERS 28 Feb 1864 (Night duty) on same cover from Courville to Chartres. (Pothion suggests scarcer dates?) | £7.50 |
| 52 | France Cachets A Date marks on cover from Boulogne for Dijon with LILLE A PARIS for 7 Nov 1867 (Night duty) and PARIS A AUXERRES the same day (Day duty) | £5 |
| 53 | France Cachets A Date mark on cover from Rouen to Paris backstamped with a LE HAVRE A PARIS 3° mark of the Night duty. This mark of the third brigade only recorded for earlier dates – possible used as a reserve mark. | £6 |



| <i>Lot</i> | <i>Description</i> | <i>Res</i> |
|------------|---|------------|
| 54 | Egypt Bi-lingual CHALLAL – LOUXOR / AMBT dated 19 XII 1902 on postcard of 'Young Bisharis' from Assouan to Oxshott in England. | £5 |
| 55 | Egypt Postcard from Branzoll in Austria addressed to Cairo with receiving mark of the bi-lingual PORT SAID – CAIRO TPO dated 28 III 06. | £5 |
| 56 | GB Commemorative cover BRITISH RAILWAYS / VALE OF RHEIDOL with four different TPO strikes – MIDLAND TPO GG SOUTH/1 for 23 JY 81 and YORK – SHREWSBURY TPO/1 22 JY 81 cancelling stamps with BRISTOL – DERBY TPO thick arc 25 Aug 81 and DERBY-BRISTOL TPO thin arc 25 AU 81 below. | £5 |
| 57 | GB BANGOR-CREWE TPO - 2 cards with 11 pieces with stamps cancelled on the Bangor-Crewe TPO or v.v. dated 1930, 32, 37, 38 x2, 53 x2, 55, 56, 58 and 59. Good strikes - a mixture of single and double circles. | £5 |
| 58 | GB CARLISLE – AYR S.C. single circle dated 6 JA 38 cancels two G6 penny stamps on TPO Centenary cover. | £5 |
| 59 | GB Three postcards with RSO cancels GILBERDYKE/ YORKS 1911, ASHBURTON 1905 and HAILSHAM 1909. | £5 |
| 60 | GB Three postcards with RSO cancels – HARLECH 1907 cds, NEWPORT, Pembrokeshire 1924 and HARLECH 1921 double circle | £5 |
| 61 | GB SHREWSBURY-YORK TPO/1 1960 with PWLF (as W41) in black PLUS SOUTH EASTERN T.P.O. UP/2 1965 with PWLF (W483) in purple | £6 |
| 62 | GB CARDIFF-CREWE T.P.O. and CREWE-GLASGOW S.C. dated 21 AP 86 on HM Queen FDC sent Special Delivery with RMSD etiquette (unique?) Cost £44 | £20 |
| 63 | GB BRISTOL & PENZANCE UP cds (W259c) W index dated SP 22 03 cancels ½d stamp on St. Ives postcard | £12 |
| 64 | GB BRISTOL - LONDON T.P.O. dated 20 SP 38 (W368a) cancels cover to HM Inspector of Taxes Gt. Yarmouth | £10 |
| 65 | GB LONDON & BRISTOL S.C. / DOWN DAY MAIL (W367) 5 JY 30 LAST day of use cancels a triple coloured George King cover. | £10 |
| 66 | GB CREWE-GLASGOW S.C./2 9 JA 68 (729a) with PWLF mark (as W41a with trip No 32-1) on cover to Edin. | £5 |
| 67 | GB BANGOR & CREWE T.P.O. / FROM EAST 3 JY 25 (W138b) cds on pc of Menai Straits with Llanfair. etc translation. Weakish to SE sector. (LAST TPO) | £10 |
| 68 | GB BANGOR – CREWE T.P.O. 8 JA 68 (W138j) plus old style boxed PWLF (W142) on cover to Bolton | £5 |
| 69 | GB EDINr & NEWCASTLE SORTING TENDER SP 19 91 (W778) cds b/st on cover from Paddington W/P to Edinburgh | £7 |
| 70 | GB EDINr M code 2 NO 3 70 (W691) cds as backstamp on cover from Liverpool to Edinburgh | £6 |
| 71 | GB EDINr & CARLISLE SORTING TENDER D AP 15 98 u/c (W696) b/st on cover from Birkenhead to Edin. | £5 |
| 72 | GB CARNFORTH & WHITEHAVEN T.P.O. / J54 duplex JA 26 08 (W163) on pc addressed to Workington | £6 |
| 73 | GB DOWN SPECIAL T.P.O. / 1 17 AU 89 cancels 1984 Readers Digest 13p coil strip with cachet commemorating 'The Royal Assent to the Uniform Penny Postage Act, 17 AUG. 1839' PLUS plain cover with RD 5p coil strip cancelled Bangor-Crewe T.P.O. for 27 th July, 1971. | £5 |
| 74 | GB GREAT WESTERN T.P.O. / GOING EAST / E JA 6 08 cds (W331) transit mark on pc of Hereford to Exeter | £7 |
| 75 | GB GRIMSBY & PETERBOROUGH / STG. CARRIAGE JU 11 05 dc (W545) cancels ½d stamp on pc of Holbeach Church interior addressed to Bourne | £5 |
| 76 | GB Similar – MR 9 10 on Bamforth song pc addressed to Wainfleet | £5 |
| 77 | GB HULL SORTING CARRIAGE DC (W279) on two postcards dated MY 2 06 and 31 AU 14. Clearly shows variation due to wear and also the different placing of the 8.PM time code | £6 |
| 78 | GB IPSWICH SORTING TENDER / DOWN / DAY dated AP 13 05 (W522 with DAY below date) on pc from Margate to St. Leonards on Sea re-addressed to Eastbourne | £8 |
| 79 | GB LINCOLN S.T. / 8PM squared circle (W74c) JA 2 02 on mourning cover with 1d lilac to Wath-on-Deerne | £7 |
| 80 | GB LONDON & BRIGHTON. S.C. / DAY.DOWN AP 11 12 (W461) with no time on cover London to Brighton. 2x ½d MacKenna stamps <u>on reverse</u> cancelled London NW10 duplex Plus similar with 1d stamp from same correspondence MY 7 12 A little weak in places. | £7.50 |
| 81 | GB LONDON & BRIGHTON S.C./ DAY DOWN MY 16 12 (W461) no time on front of an Ilfracombe pc addressed to Brighton (weak at top) | £5 |
| 82 | GB LONDON & BRISTOL S.C. / DOWN DAY MAIL (W367) OC 8 08acncels ½d stamp on pc of Trafalgar Square addressed to Port Talbot | £12 |
| 83 | GB LONDON & LEEDS S.C. / DOWN DAY MAIL (W609) SP 13 13 as transit mark on pc from France to Bury St. Edmunds | £15 |
| 84 | GB LONDON SHREWSBURY T.P.O. / No. 1 Side (W122r) 16 MY 88 on two different cacheted covers on the first run of this service. | £5 |
| 85 | GB BRISTOL & NEWTON ABBOT / T.P.O. code A OC 2 79 (W257) as a transit mark on 1d penny plate 219 cover (slight damage at top) from Crediton to Windsor via Bristol. SCARCE | £60 |
| 86 | GB LONDON-YORK-EDINBURGH T.P.O. / 1 (W579e) Two covers - 2 AP 61 with PWLF (W580d with 1) addressed to Southport and same mark 26 SP 85 on plain last run cover for Bath. | £5 |



| <i>Lot</i> | <i>Description</i> | <i>Res</i> |
|------------|---|------------|
| 87 | GB S. T MANCHESTER / 2. (W149e) 7 JU 72 as b/st on penny plate 119 entire from London to Manchester | £10 |
| 88 | GB A / MANCHESTER / S.T. (149c) 10 MR 69 on London Official/Paid cover from Lord Chancellor to Manchester. Interesting small triangular mark in same colour ink as the London mark? | £10 |
| 89 | GB MIDLAND T.P.O. / GOING SOUTH cds 3 ?? 35 (W226b) cancels Late Fee postal stationery card to Worsley | £7 |
| 90 | GB NORTH EASTERN T.P.O. UP (W620) two examples Fe 9 05 and AP 20 05 on pcs to Northampton and Plymouth | £6 |
| 91 | GB EAST ANGLIAN T.P.O. UP – PE SECT/2 13 SP 61 with PWLF mark (as W41) AND NORTH EASTERN T.P.O. UP / 1 (W586) 23 AU 60 with PWLF mark (as W580d with code 1. Both addressed to Hull. | £5 |
| 92 | GB NORWICH SORTING CARRIAGE / UP? (W559) AU 2 10 on pc from London to Swanton Abbot, Norwich | £5 |
| 93 | GB NORWICH SORTING CARRIAGE / DOWN (W557) AU 20 13 cancels pc Inverness to Norwich (faint RHS) | £8 |
| 94 | GB PETERBOROUGH / SORTING TENDER A (W539) FE 22 06 cancels stamp on pc of Cromer for Swaffham | £20 |
| 95 | GB SOUTH WALES UP Bag Tender mark (W3902g) dated 6 OCT1988 with BT at the base erased used as a temporary replacement when the duty datestamps were lost when the Carmarthen office flooded | £8 |
| 96 | GB SOUTH-WALES-SORTING-CARRIAGE / NORTH-MAIL-UP code B AU 25 06 (W263) with stops cancels a ½d stamp on pc of New Milford to Lamplugh? | £30 |
| 97 | GB SHREWSBURY-STAFFORD / SORTING CARRIAGE and v.v. (W122g and 122h) both 15 JUL 1985. Large 34mm rubber stamps in red ink used during the remodelling of Crewe station when TPOs were diverted. | £14 |
| 98 | GB TAMWORTH & HEREFORD S.C. UP (W110) 11 MY 14 cancels stamp on pc of Craven Arms for Buxton | £6 |
| 99 | GB UP SPECIAL G / T.P.O. (W744) 19 MY 49 on Late Fee cover to Chelmsford | £10 |
| 100 | GB YORK & SCARBORO' S.T. (W629) SP 3 09 cancels a pc from Flaxton to Scarborough | £10 |
| 101 | GB SHREWSBURY & ABERYSTWYTH S.C. (W105) AU 17 05 cancels stamp on comic pc for Llanfihangel | £7.50 |
| 102 | GB WHITEHAVEN S.T. code A JU 18 92 (W161) on OHMS Inland Revenue entire to Whitehaven | £12 |
| 103 | GB WHITEHAVEN S.T. time 6.45AM (W161b transit mark on pc from France to Whitehaven | £8 |
| 104 | GB WHITEHAVEN S.C. (W162) SP 21 16 with no time cancels stamp on pc to Millom (scarcer w/o time) | £11 |
| 105 | GB WHITEHAVEN S.C. thick arc double circle (W164) 27 MY 24 cancels 1d stamp on birthday pc to Cartmel. Decent strike but card is a little dirty | £10 |
| 106 | GB WHITEHAVEN-PRESTON T.P.O. (W164c) 3 MR 30 on a George King cover. First day of use! | £12 |
| 107 | GB NORTH WESTERN T.P.O. NIGHT DOWN / 2 (W65b) 10 OC 89. Commercial use cancels the stamp on a longer cover addressed to 'Harlequin Danceworks. Dawlish' PLUS PENZANCE BRISTOL TPO last run 9 JA 2004 on an uprated Post Paid Royal Mail illustrated cover for St Austell. | £5 |
| 108 | GB SHREWSBURY – YORK / T.P.O. 2 cds covers (W118l) 25 AU 81 and (W118m) 18 AU 81 both addressed to Hounslow PLUS (W118l) on FDC 12 MR 80 (one stamp only) Three covers with reserve stamps (Wilson) | £5 |
| 109 | GB SOUTH WESTERN T.P.O. NT. DOWN / 1 (W434n) 17 JU 60 on PWLF mark (W439a) on cover to Hull PLUS the reserve stamp SOUTH EASTERN T.P.O. / DOWN (W479h) dated 19 FE 72 on final run (Scotsman cvr) | £5 |
| 110 | Czech 2 x 1938 covers to England with 'PRAHA – JICIN / 18' and) OC 29 05 as a 'JICIN – PRAHA /19' TPO marks cancelling stamps commemorating the Czech Legion (France & Italy) Sender – Josef Vicek (stamp designer) | £8 |
| 111 | Denmark cover (German stamp) cancelled 'FRA TYSKLAND' next to nearby double circle cancel of the 'FREDERICA – FLENSBERG T993' TPO 22.7.86 | £5 |
| 112 | Denmark Cover (German stamp) cancelled 'FRA TYSKLAND' next to the machine cancellation of the 'FREDERICA – FLENSBERG T993' TPO 22.7.87 | £5 |
| 113 | Kenya 1960 cover with purple boxed 'POSTED ON THE MAIL TRAIN / NAIROBI – MOMBASA' Stamp cancelled at Mombasa | £5 |
| 114 | GB 'EXETER & TORRINGTON SC / AU 28 / 08 / UP' Fair cancel on pc Devon to London (As W352) | £5 |
| 115 | GB 'EXETER & TORRINGTON SC / JY 4 / 08 / UP' on pc (Hunters Inn, Haddonmouth) to London (As W352) | £7 |
| 116 | GB 'GREAT WESTERN TPO / E / AU 27 / 08 / GOING WEST' (W332a) on redirected pc Sussex to Oxford | £10 |
| 117 | GB 'L & E T.P.O. / B / MY 23 / 87 / FROM-THE-WEST' (W306) 2 strikes on cover to Epsom | £20 |
| 118 | GB 'GREAT WESTERN T.P.O. DOWN / 25 AP / 60 / -2- ' (W338k) with black boxed '1d to Pay/Posted in T.P.O./ Late Fee / Not Paid/21-22/2' (W344a) | £5 |
| 119 | GB 'LONDON & BRISTOL S.C. / * / NO 23 / 03 DOWN.DAY.MAIL' (W367) transit mark on pc from Sussex | £15 |
| 120 | GB 'EDIN ^R M / 1 / SP 11 / 68' (W690) Ed & Carlisle SC backstamp on cover from Royal Agric Coll, Cirencester to Edinburgh. Cirencester cancels penny plate 109. | £8 |
| 121 | GB 'EDIN ^R M / 2 / JU 2 / 70' (W690) Ed & Carlisle SC backstamp on similar cover to Lot 120 Stamp is plate 114 | £8 |
| 122 | GHANA 'T.P.O. EASTERN UP / * / 27 JY / 60 / GHANA' 3 strikes on cover to England | £5 |
| 123 | GHANA 'T.P.O. WESTERN UP / * / 12 OC / 62 /GHANA' 4 strikes on cover to England | £5 |



| <i>Lot</i> | <i>Description</i> | <i>Res</i> |
|----------------|---|------------|
| 124 | GHANA 'T.P.O. CENTRAL / * / 13) C 62 / GHANA' (Part of 'L' in CENTRAL broken) 2 strikes on cover to England | £5 |
| 125 | GHANA 'T.P.O. WESTERN DOWN / * / 23 MR / 62 / GHANA' 2 strikes on cover to England | £5 |
| 126 | ITALY Black boxed 'CASSETTI POSTALI / SUL TRAM' Posted into the box on the tram) on pc from Mantua to Northumberland | £10 |
| 127 | GREECE 'K.P.TH. 1A / 5 IX 73 (Mobile Piraeus - Thessalonica) on cover to Australia | £5 |
| 128 | NEW ZEALAND 'TRAVELLING. P.O. / INWARDS / 11 OC / 04 / WELLINGTON-WANGANUI' Transit mark on pc from Palmerston North to England | £8 |
| 129 | MEXICO 'SERVICIO / 8 FEB 28 - 4.30 / 244 / AMBULANTE' duplex mark on cover Santa Barbara to US | £8 |
| 130 | CEYLON 'DOWN BANDERAWELA T.P.O / 2 3 / 67' 2 strikes on cover to England | £5 |
| 131 | CEYLON 'UP BANDERAW... T.P.O / 22 OC / 66' 2 strikes on cover to England | £5 |
| 132 | MALAYSIA 'RAILWAY T.P.O / 3 APR 70 / SABAH MALAYSIA' on cover to Yorkshire | £5 |
| 133 | FINLAND 6 x 'FINLANDIA '88' postcards with strikes of 'PV5; PV6; PV7; PV8; PV9 and PV10' All routes noted on cards | £8 |
| Seapost | | |
| 134 | Alexandria 192? paq H2715 cancels GB stamp on Madeira postcard plus 'British Mail/Posted on the High Seas/ ex. RMS "Transylvania" in violet | £7 |
| 135 | Alexandria/Station Maritime 1979 paquebot cover with 3 different cachets from "Cunard Princess" | £5 |
| 136 | GB Ardrossan (Ayr) 1968 paq cover H269? MV "Lion" | £5 |
| 137 | Denmark Aarhus 1971 paq cover H538 on ship photo postcard of MV "Aaro" Hull | £5 |
| 138 | USA Astoria, Oregon 1994 paq cover H1819 | £5 |
| 139 | Italy Augusta 1978 paq cover H1118 signed by master M/T Oceanus | £5 |
| 140 | GB Ayr (KA7 1AA) 1986 paq cover H270 MV Kaina Panama stamps | £5 |
| 141 | Panama City 1995 paq cover H2078 M/S Sun Viking "Liza" | £5 |
| 142 | Balboa 1996 unlisted double boxed paq CTC cruise Lines "Southern Cross" | £5 |
| 143 | Balsta (Malmo) 1984 paq cover M/S Ruthensand" to GB | £5 |
| 144 | Spain Barcelona 1980 paq cover 4 different marks H1248, H1250, H1251, H1253 | £5 |
| 145 | Bari 1979 paq cover H1117 M.T. "Inka" to Germany | £5 |
| 146 | GB Basildon 1989 paq cover H4 "Monte Pascoal" | £5 |
| 147 | Guadeloupe Basseterre 1990 cover unlisted boxed Paquebot M/V "Costa Classica" | £5 |
| 148 | Gambia Bathurst 1964 cover unlisted paq PAQUET | £5 |
| 149 | Bayonne 1983 paq cover H409 M/S "Lancasterbrook" | £5 |
| 150 | GB Bideford (Exeter) 1990 paq cover H62 from M/V "Gladonia" | £5 |
| 151 | Bonaire 1998 cover unlisted 43mm paq from MS "Rotterdam VI" | £5 |
| 152 | Bordeaux 1970/72 2 different paq covers H410 & H414 from "Comet" | £10 |
| 153 | Deutsche Seepost Australische Hauptlinie 1904 on 10pfg pspc Gruss Aus card of SS "Grosser Kurfest" to Redruth | £15 |
| 154 | Deutsche Seepost Australische Hauptlinie 1904 on 10pfg pspc Gruss Aus card of SS "Barbarossa" | £15 |
| 155 | Kaiserliche Marine Schiffpost No. 136, 1917 unfranked Felpost on art postcard | £10 |
| 156 | Deutsche Seepost Ost-Afrika Linie / a 1932 on 25pfg Spanish postcard | £10 |
| 157 | Netherlands Postagent Amsterdam-Batavia /3 1946 on postcard SS "Oranje" | £7 |
| 158 | Netherlands Postagent Batavia-Amsterdam /2 1946 on postcard SS "Oranje" | £7 |
| 159 | Netherlands Postagent Amsterdam Jakarta /2 1951 on postcard SS "Oranje" | £7 |
| 160 | Netherlands Postagent Rotterdam-Batavia /- 1949 on postcard MV "Willem Ruys" | £7 |
| 161 | Netherlands Postagent Rotterdam-Batavia /10 1948 on postcard MV "Willem Ruys" | £7 |
| 162 | GB Small unstamped cover from USA to Liverpool with circular PAID/LIVERPOOL/U.S./ PACKET/ 10 FE 60/1A. Small cds PAID and faint NEW YORK AM PACKET (maybe) | £5 |
| 163 | Netherlands Cover with 3 x 1951 10+5c Child Care Charity stamps cancelled with "POSTAGENT / 11.X.52/ ROTTERDAM - DJAKARTA" seapost mark | £5 |
| 164 | Netherlands Picture pc of 'Johan Van Barnevelt' cancelled "POSTAGENT a/b MS JvOLDENBARNEVELT" | £5 |
| 165 | Netherlands Holland America Line air mail cover cancelled with "POSTAGENT a/b SS RUNDAM 10 X 64" | £5 |
| 166 | New Zealand "MARINE ----OFFICE / N.Z. / 21 AP 31 1-PM / R.M.S. MONOWAI" on pc of Tahiti - London | £7 |
| 167 | Germany "DEUTSCHE SEEPOST / LINIE / HAMBURG / NEW YORK / 12.1 .. / VII" on 'Radio Ocean Brief' cover to Scotland (Posted on the Milwaukee in service during 1929) | £10 |
| 168 | Germany PC of 'MS Wilhelmshaven' cancelled with "DEUTSCHE SCHIFFPOST / MS WILEMSHAVEN / 03.08.87 / WILEMSHAVEN - HELIGOLAND" | £5 |
| 169 | Italy PC (Environs de Toulon) to England with GV 1½d cancelled "NAPOLI - PORTO" also has a boxed "PIROSCAFI / ESTERI" (foreign steamship) in black | £15 |
| 170 | Italy 2 covers with US stamps cancelled machine "GENOVA - NEW YORK / P. fo REX / PRIMO VIAGGIO / GENOVA - NEW YORK 27 IX 32 and the return voyage on 10 X 32 | £10 |



| Lot | Description | Res |
|-------------------------------|--|-------------|
| 171 | GB Postcard of White Star Line 'RMS Majestic' cancelled "TRANSATLANTIC POST OFFICE/DE 13 /11/4" faint but readable | £10 |
| 172 | GB Piece GV 1d McKennal stamp with very fine "TRANSATLANTIC POST OFFICE*/JY 13/12/9" (Majestic?) | £5 |
| 173 | France PC of trams in 'Place d'Arms, Oran' to Devon. 10c 'Sower' cancelled by two "BAT.A.VAP / 8.55/13-7/05/ MARSEILLE A ORAN" sea post mark | £7 |
| 174 | France "AMB. / MARITIMO. / 31.AGO.62/1/CEUTA – ALGECIRAS" 2 strikes on cover to England | £5 |
| 175 | Spain "AMB./MARITIMO / 16.MAY 59 / MELILLA – MALAGA" Seapost 2 strikes on cover to England | £5 |
| 176 | Spain "AMB./MARITIMO / 22 DIC 61. / TANGER - ALGECIRAS" Seapost 2 strikes on cover to England | £5 |
| 177 | Spain "AMB./MARITIMO / 25 JUL 62. / 2 / ALGECIRAS – TANGER" Seapost 2 strikes on cover to England | £5 |
| 178 | GB GREENOCK Separate 'GREENOCK' and 'SHIP' handstamps (Robertson S1) on 1790 cover from New York to a merchant in Glasgow carried on the 'MARGARET'. It also contained an enclosure of a letter to the merchant's wife (included in this lot) Scarce and rare. See Article in Journal. Vol. 73 No.2 Summer 2019 | £199 |
| 179 | GB GREENOCK & ARDRISHAIG PKT/COLUMBA GAP8 Code B on MacBrayne publicity card JY 23 03 | £12 |
| 180 | GB GK & ARDRISHAIG PACKET/ COLUMBA GAP9 Code B SP 2 12 (2 strikes on two McKennal ½d stamps on card of Columba at Tarbert addressed to Michigan, USA. | £15 |
| Late railway additions | | |
| 181 | GB CALEDONIAN T.P.O / DAY UP unframed circle (W648) dated November 13 th , 1875 cancels a Penny plate 109 on a cover from Balmoral to Edinburgh Scarce. | £35 |
| 182 | GB Grosvenor Series postcard titled "TAKING THE MAILS AT COLWYN BAY" showing a double headed train about to collect mailbags from the standard. Edwardian card but no stamp (Ex Harold Wilson) | £10 |
| 183 | GB "IPSWICH SORTING CARRIAGE / NIGHT DOWN" DE 31 10 (W525g) cancels stamp on pc of 'The Mansion Gates Easton' addressed to London | £5 |
| 184 | GB Caledonian TPO small circle "CR/F" (W643) on neat penny star <u>front</u> from London to Huntley, Aberdeenshire | £5 |
| 185 | GB "CALEDONIAN T.P.O. / DAY UP" AU 20 0? (as W658d but no stop between N and T) cancels the stamp on a pc of 'Tron Gate & Tron Steeple, Glasgow' addressed to Peebles. Some over inking on date but good. | £7 |
| 186 | Luxembourg "CRUCHTEN – / LAROCLETTE / F.C. / 28 8 06" boxed TPO mark on multiview pc of Luxembourg addressed to Paris. Two strikes front and back | £7 |
| 187 | Luxembourg "LUXEMBOURG – RODANGE / 27. 7. 14 / AMBULANT" 2 boxed TPO cancels one cancelling the stamp on PSPC addressed to Nurnberg Germany | £7 |
| 188 | Luxembourg "KLEINBETTINGEN ETTTELBRUCK / 27.12.17 / CONVOYAGE" boxed TPO cancel on PSPC addressed to LUXEMBOURG GARE | £7 |
| 189 | Luxembourg "BAHNPOST / LUXEMBOURG / KARTHAUS / 12.3.00" boxed TPO cancels PSPC addressed to Walferdange, Luxembourg | £7 |
| 190 | Austria "ST. POLTEN – RUPRECHTOFEN / 174" and v.v. Two matching covers dated 2.2.66 addressed to England | £5 |
| 191 | EGYPT "CAIRO – ALEXANDRIA / TPO / 23. V. 08 T.19" on front of a PC of Mansourah addressed to Pisa, Italy. | £5 |
| 192 | EGYPT Two TPO marks "SUEZ – ISMAILIA / 23 VII 07" and "TRAVELLING POST OFFICE / 25 VII 07" on rear of PC of 'Customs House, Sydney' addressed to a member of the 1 st Kings Royal Rifles at Khartoum, Sudan. Stamp removed neatly! | £5 |
| 193 | GB IRELAND "G.S & W. T.P.O. / NIGHT MAIL / UP / SP 9 03?" cancels stamp on a PC of Queenstown addressed to London | £5 |
| 194 | GB "GNR" perfin on stamp attached to a <u>Great Northern Railway</u> postcard of Crowland Abbey addressed to Leverington in Cambridgeshire | £5 |

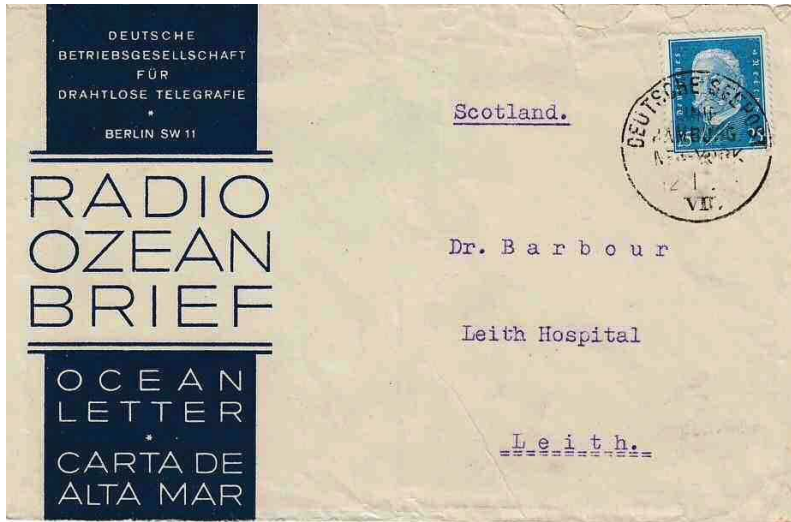
First come, First served

The following items are simply a 'Buy it Now' offering items of a more varied nature. First to contact (preferably by email but, if not, by phone) buys the lot.

| No. | Description | Price |
|-----|---|-------|
| #1 | 10 FDCs (all different types) for 4d olive brown cancelled on the Bristol-Derby TPO dated 16 SP 68 | £5 |
| #2 | 7 covers cancelled either 30.6.69 or 1.07.69 for the last day of the ½d and the first day of the 1d Late Fee on the Bristol - Derby TPO | £10 |
| #3 | 7 postal stationary/letter cards cancelled on the Bristol-Derby TPO all with mixed sterling/decimal frankings | £7 |
| #4 | 6 FDC covers all cancelled on the Birmingham - Crewe TPO 1965-6 - most with only one or two stamps from the new set. | £5 |



| | | |
|-----|--|-----|
| #5 | 1960 pair of general Letter Office Commemorative FDCs both with ½d Late Fee stamps -on each of the two matching covers cancelled on the Birmingham-Crewe TPO dated 7 JY 60 | £10 |
| #6 | 10 covers (1963 - 67) all with different stamp combinations cancelled on the Birmingham-Crewe T.P.O. and v.v. some with booklet stamps with selvedge | £10 |
| #7 | 6 covers (1952 -72) with 5 different Bangor-Crewe TPO and v.v. cancels All good strikes. | £5 |
| #8 | 8 covers (1956 - 72 cancelled by 5 different Caledonian TPO cancels including Glasgow Section. | £6 |
| #9 | Includes two 'AM' strikes & first use of RS2068 dated 1 OC 96 | £7 |
| #10 | 6 TPO covers all with Crewe as a terminal - 2 x Birmingham-Crewe, 1x Crewe-Bangor and v.v 1x Cardiff-Crewe and 1x Crewe-Glasgow SC | £5 |
| #11 | 2 Commemorative covers for the last runs of the Crewe-Bangor TPO dated 9 FE 79 cancelling 11p Caernarvon Castle stamps (from 1978 historic buildings set) | £4 |



Germany "DEUTSCHE SEEPOST / LINIE / HAMBURG / NEW YORK / 12.1 .. / VII" on 'Radio Ocean Brief' cover to Scotland (Posted on the Milwaukee in service during 1929) see lot 167



Lot 154



Lot 124